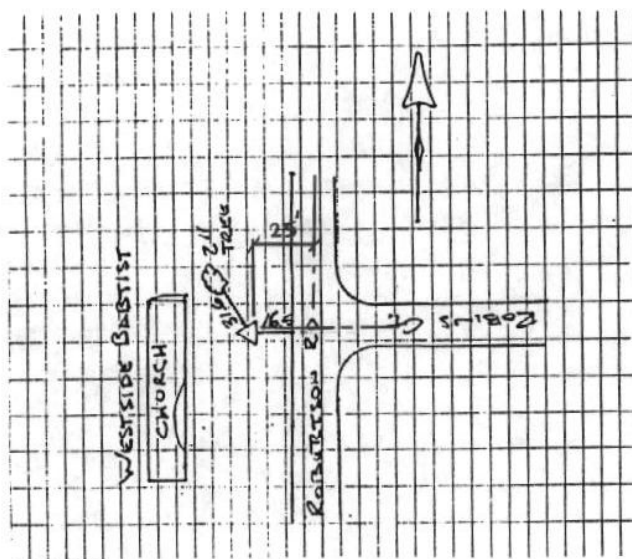


# CITY OF MURRAY CONTROL MONUMENT CARD

DESIGNATION: B6 GPS AZ  
TYPE: CONCRETE MONUMENT W/ CITY DISK  
DATE SET: JUNE 1997 QUAD: MURRAY, KY.  
HORIZONTAL DATUM: NAD-83 VERTICAL DATUM: NAVD-88  
STATE: KENTUCKY COUNTY: CALLOWAY ZONE: KY. S 1602

NORTHING: 1748974.37 FT  
EASTING: 876682.06 FT  
ELEVATION: 564.22 FT (GPS)  
LATITUDE: N 36°36'09.38870" LONGITUDE: W 088°21'07.28015"  
SCALE: CONVERGENCE:  
PLANE AZI. TO AZI. MARK:

To Reach: From the intersection of Robertson Rd. and  
Robins Ct., go west about 16.5 ft. to the station.



NOT TO SCALE



GRW Aerial Surveys, Inc.  
801 Corporate Dr. Lexington Ky. 40503  
(606)223-3999